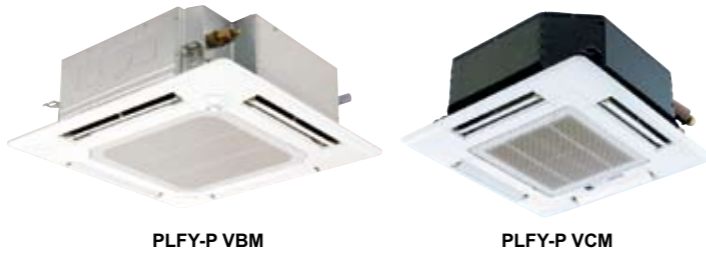


INDOOR UNIT Ceiling cassette type 4-way airflow

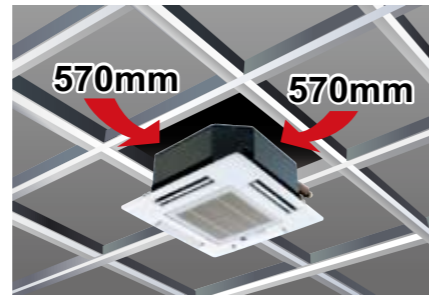
PLFY-P VBM-E i-see Sensor PLFY-P VCM-E



The new 4-way cassette VBM offers 72 different airflow patterns, making it ideal for applications with ceilings up to 4.2 m (13-13/16ft) in height.



Compact body to match with 2 feet (600mm) x 2 feet (600mm) ceiling design (VCM)



Specifications

		PLFY-P32VBM-E	PLFY-P40VBM-E	PLFY-P50VBM-E	PLFY-P63VBM-E	PLFY-P80VBM-E	PLFY-P100VBM-E	PLFY-P125VBM-E
Power source		1-phase 220-240V 50Hz / 1-phase 200V 60Hz						
Cooling capacity	*1 kW	3.6	4.5	5.6	7.1	9.0	11.2	14.0
	*1 BTU/h	12,300	15,400	19,100	24,200	30,700	38,200	47,800
Heating capacity	*1 kW	4.0	5.0	6.3	8.0	10.0	12.5	16.0
	*1 BTU/h	13,600	17,100	21,500	27,300	34,100	42,700	54,600
Power consumption	Cooling kW	0.03	0.04	0.05	0.07	0.15	0.16	
	Heating kW	0.02	0.03	0.04	0.06	0.14	0.15	
Current	Cooling A	0.22	0.29	0.36	0.51	1.00	1.07	
	Heating A	0.14	0.22	0.29	0.43	0.94	1.00	
External finish (Munsell No.)		Galvanized steel sheet White (6.4Y 8.9/0.4)						
Dimension H x W x D	Unit mm(in.)	258 x 840 x 840 (10-3/16 x 33-8/1 x 33-8/1)					298 x 840 x 840 (11-3/4 x 33-1/8 x 33-1/8)	
	Panel mm(in.)	35 x 950 x 950 (1-3/8 x 37-7/16 x 37-7/16)						
Net weight	Unit kg(lbs.)	22 (49)			23 (51)		27 (60)	
	Panel kg(lbs.)	6 (13)						
Heat exchanger		Cross fin (Aluminum plate fin and copper tube)						
Fan	Type x Quantity	Turbo fan x 1						
	Airflow rate *2 (Lo-Mid1-Mid2-Hi)	m³/min	11-12-13-14	12-13-14-16	14-15-16-18	16-18-20-22	21-24-27-29	22-25-28-30
		L/s	183-200-217-233	200-217-233-267	233-250-267-300	267-300-333-367	350-400-450-483	367-417-467-500
	cfm	388-424-459-494	424-459-494-565	494-530-565-636	565-636-706-777	742-848-953-1024	777-883-989-1059	
External static pressure	Pa	0						
Motor	Type	DC motor						
	Output kW	0.050			0.120			
Air filter		PP Honeycomb						
Refrigerant pipe diameter	Gas (Flare) mm(in.)	ø12.7 (ø1/2)		ø12.7 (ø1/2) / ø15.88 (ø5/8) (Compatible)		ø15.88 (ø5/8)		ø15.88 (ø5/8) / ø19.05 (ø3/4) (Compatible)
	Liquid (Flare) mm(in.)	ø6.35 (ø1/4)		ø6.35 (ø1/4) / ø9.52 (ø3/8) (Compatible)		ø9.52 (ø3/8)		
Field drain pipe diameter		mm(in.) O.D. 32 (1-1/4)						
Sound pressure level (Lo-Mid1-Mid2-Hi) *2 *3		dB(A) 27-28-29-31		27-28-30-31		28-29-30-32		30-32-35-37
		34-37-39-41		35-38-41-43				

Automatic Air Speed Adjustment

Auto-fan-speed mode enables speedy and comfortable heating during heating startup.

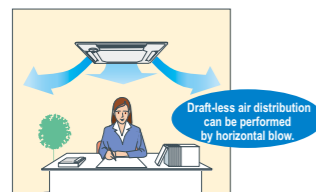
The Auto-fan-speed mode is added to the usual four steps "Low, Mid1, Mid2, High." The Auto-fan-speed mode enables speedy and comfortable air conditioning because the air flow speeds up when starting, and air flow slows down when the air conditioning becomes stable. (PLFY-P VBM-E ONLY)



* When using a wireless remote controller, initial settings are required.

Draft-less Air Distribution

The horizontal blow mode* newly employed supplies airflow horizontally not bringing cooled/warmed air directly to occupants thus preventing discomfort sensation due to excessive cooling or direct exposing of occupants to the air blow. (PLFY-P VBM-E ONLY)

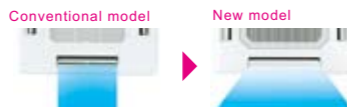


*Default
*The ceiling may be smudged at a spot where the supplied airflow is seriously disturbed.

Wide Air Flow (PLFY-P VBM-E ONLY)

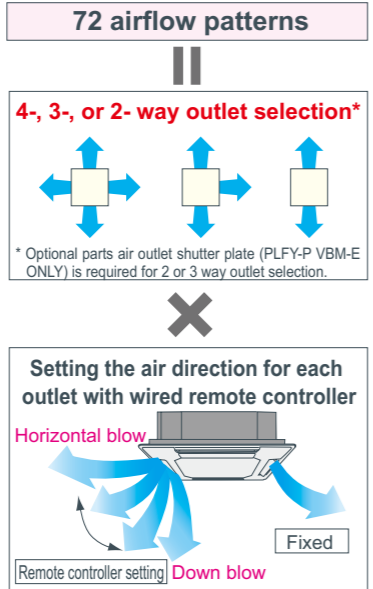
Cooling softly with Wide Air Flow

Discharge air reaches wider area and the fan speed is decreased by 20% thanks to the new wide shape air outlet.



72 patterns of airflow to accommodate any room layout are available. *First in the industry

The number of outlet can be set to 4, 3, or 2. Flexible airflow is available by fixing the up-down airflow direction of the outlet with a wired remote controller (or manually).

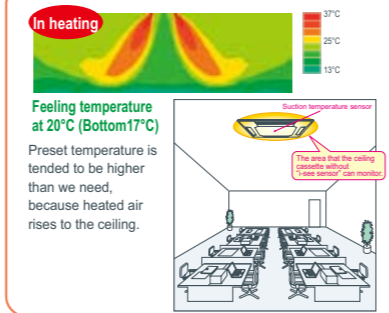


"i-see sensor" can be used with ceiling cassette type 4-way airflow unit. (Option PAC-SA1ME-E, PLYF-VBM-E ONLY)

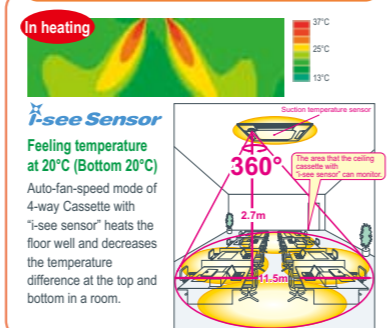
New 4-way Cassette PLYF-VBM controls the temperature difference at the top and bottom in a room by checking the floor temperature with "i-see sensor". Comfortable air conditioning can be realized smoothly with "sensible temperature control." (Option PAC-SA1ME-E, PLYF-VBM-E ONLY)

Prevents overcooling/overheating, and improves comfort/energy-efficiency

Without i-see sensor: preset temperature at 23°C



With i-see sensor*Auto fan speed: preset temperature at 20°C



		PLFY-P20VCM-E	PLFY-P25VCM-E	PLFY-P32VCM-E	PLFY-P40VCM-E	
Power source		1-phase 220-240V 50Hz				
Cooling capacity	*1 kW	2.2	2.8	3.6	4.5	
	*1 BTU/h	7,500	9,600	12,300	15,400	
Heating capacity	*1 kW	2.5	3.2	4.0	5.0	
	*1 BTU/h	8,500	10,900	13,600	17,100	
Power consumption	Cooling kW	0.05	0.05	0.06	0.06	
	Heating kW	0.05	0.05	0.06	0.06	
Current	Cooling A	0.23	0.23	0.28	0.28	
	Heating A	0.23	0.23	0.28	0.28	
External finish (Munsell No.)		Galvanized steel sheet with gray heat insulation White (6.4Y 8.9/0.4)				
Dimension H x W x D	Unit mm(in.)	208 x 570 x 570 (8-1/4 x 22-1/2 x 22-1/2)				
	Panel mm(in.)	20 x 650 x 650 (13/16 x 25-5/8 x 25-5/8)				
Net weight	Unit kg(lbs.)	15.5 (35)		17 (38)		
	Panel kg(lbs.)	3 (7)		3 (7)		
Heat exchanger		Cross fin (Aluminum plate fin and copper tube)				
Fan	Type x Quantity	Turbo fan x 1				
	Airflow rate *2 (Lo-Mid-Hi)	m³/min	8-9-10	8-9-10	8-9-11	8-9-11
		L/s	133-150-167	133-150-167	133-150-183	133-150-183
	cfm	283-318-353	283-318-353	283-318-388	283-318-388	
External static pressure	Pa	0 (direct blow)				
Motor	Type	1-phase induction motor				
	Output kW	0.011	0.015	0.02	0.02	
Air filter		PP Honeycomb (long life type)				
Refrigerant pipe diameter	Gas(Flare) mm(in.)	ø12.7 (ø1/2)				
	Liquid(Flare) mm(in.)	ø6.35 (ø1/4)				
Field drain pipe diameter		mm(in.) O.D. 32 (1-1/4)				
Sound pressure level (Lo-Mid-Hi) *2 *3		dB(A) 28-31-35		28-31-37		
		29-33-38		30-34-39		

Notes:

- *1 Cooling/Heating capacity indicates the maximum value at operation under the following condition.
Cooling : Indoor 27°C(81°F)DB/19°C(66°F)WB, Outdoor 35°C(95°F)DB
Heating : Indoor 20°C(68°F)DB, Outdoor 7°C(45°F)DB/6°C(43°F)WB
- *2 Airflow rate/Sound pressure level are in (low-middle-high) or (low-middle1-middle2-high).
- *3 It is measured in anechoic room at power source 230V.