

INDOOR UNIT Ceiling Concealed Type

PEFY-P VMA(L)-E

Middle Static Pressure
35~150Pa

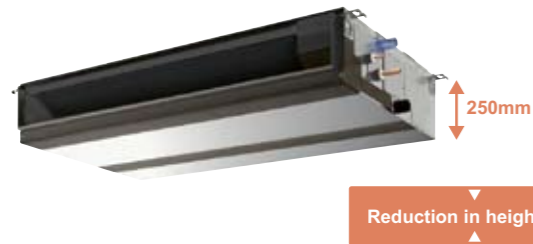
Slim Body
Height 250mm

With precise control of indoor temperature while operating with optimum energy usage, it offers a high-energy saving efficiency.



Compact Indoor Units

For all models, unit height are unified to 250mm. Compared to the previous model, the height size is reduced, allowing installation in tight spaces, such as ceiling cavities or drop-ceilings.



PEFY-P VMA(L)	20	25	32	40	50	63	71	80	100	125	140
Height mm	250										
Width mm	700		900		1,100		1,400		1,600		
Depth mm	732										

External static pressure

Five-stage external static pressure settings provide flexibility for duct extension, branching and air outlet configuration and are adjustable to meet different application conditions.

Setting ranges to a maximum of 150Pa.

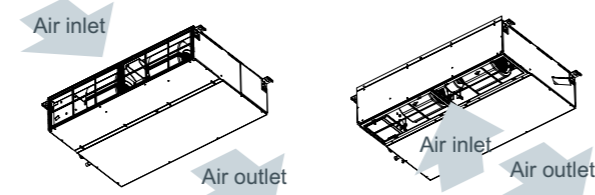
External static pressure setting

Series	20	25	32	40	50	63	71	80	100	125	140
PEFY-P VMA(L)	35/50/70/100/150Pa										



Air Inlet

- (1) Rear inlet (2) Bottom inlet



Drain Pump Option

The line-up consists of two types, models with or without a built-in drain pump allowing more freedom in piping layout design.



PEFY-P VMA-E Drain pump built-in



PEFY-P VMA(L)-E No Drain pump

* Units with a "L" at the end of the model name are not equipped with a drain pump.

Analogue input

Analogue input allows unit to control the fan speed setting in conjunction with damper condition.

IT terminal

IT terminal is available. For details, contact your local distributor.

Specifications

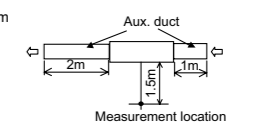
		PEFY-P20VMA(L)-E	PEFY-P25VMA(L)-E	PEFY-P32VMA(L)-E	PEFY-P40VMA(L)-E	PEFY-P50VMA(L)-E	
Power source		1-phase 220-230-240V 50 / 60Hz					
Cooling capacity (Nominal)	*1 kW	2.2	2.8	3.6	4.5	5.6	
	*1 BTU/h	7,500	9,600	12,300	15,400	19,100	
Heating capacity (Nominal)	*2 kW	2.5	3.2	4.0	5.0	6.3	
	*2 BTU/h	8,500	10,900	13,600	17,100	21,500	
Power consumption	Cooling *3 kW	0.06 [0.04]	0.06 [0.04]	0.07 [0.05]	0.09 [0.07]	0.11 [0.09]	
	Heating *3 kW	0.04	0.04	0.05	0.07	0.09	
Current	Cooling *3 A	0.53 [0.42]	0.53 [0.42]	0.55 [0.44]	0.64 [0.53]	0.74 [0.63]	
	Heating *3 A	0.42	0.42	0.44	0.53	0.63	
External finish		Galvanized steel plate					
Dimension H x W x D	mm	250 x 700 x 732	250 x 700 x 732	250 x 700 x 732	250 x 900 x 732	250 x 900 x 732	
	in.	9-7/8 x 27-9/16 x 28-7/8	9-7/8 x 27-9/16 x 28-7/8	9-7/8 x 27-9/16 x 28-7/8	9-7/8 x 35-7/16 x 28-7/8	9-7/8 x 35-7/16 x 28-7/8	
Net weight	kg(lbs)	23 (51) [22 (49)]	23 (51) [22 (49)]	23 (51) [22 (49)]	26 (58) [25 (56)]	26 (58) [25 (56)]	
Heat exchanger		Cross fin (Aluminum fin and copper tube)					
Fan	Type x Quantity	Sirocco fan x 1					
	Airflow rate (Low-Mid-High)	m³/min	6.0 - 7.5 - 8.5	6.0 - 7.5 - 8.5	7.5 - 9.0 - 10.5	10.0 - 12.0 - 14.0	12.0 - 14.5 - 17.0
		L/s	100 - 125 - 142	100 - 125 - 142	125 - 150 - 175	167 - 200 - 233	200 - 242 - 283
	cfm	212 - 265 - 300	212 - 265 - 300	265 - 318 - 371	353 - 424 - 494	424 - 512 - 600	
External static pressure *4	Pa	<35> - 50 - <70> - <100> - <150>	<35> - 50 - <70> - <100> - <150>	<35> - 50 - <70> - <100> - <150>	<35> - 50 - <70> - <100> - <150>	<35> - 50 - <70> - <100> - <150>	
Motor	Type	DC motor					
	Output kW	0.085	0.085	0.085	0.085	0.085	
Air filter		PP honeycomb fabric.					
Refrigerant pipe diameter	Liquid (R410A) (R22,R407C) mm(in.)	6.35 (1/4) Brazed	6.35 (1/4) Brazed	6.35 (1/4) Brazed	6.35 (1/4) Brazed	6.35 (1/4) Brazed	
	Gas (R410A) (R22,R407C) mm(in.)	12.7 (1/2) Brazed	12.7 (1/2) Brazed	12.7 (1/2) Brazed	12.7 (1/2) Brazed	12.7 (1/2) Brazed	
Field drain pipe diameter	mm(in.)	O.D.32 (1-1/4)	O.D.32(1-1/4)	O.D.32(1-1/4)	O.D.32 (1-1/4)	O.D.32 (1-1/4)	
Sound pressure level (measured in anechoic room)							
(Low-Mid-High) *3 *5	dB(A)	26-28-29	26-28-29	28-30-34	28-30-34	28-32-35	
	*3 *6 dB(A)	23-25-26	23-25-26	23-26-29	23-27-30	25-29-32	

		PEFY-P63VMA(L)-E	PEFY-P71VMA(L)-E	PEFY-P80VMA(L)-E	PEFY-P100VMA(L)-E	PEFY-P125VMA(L)-E	PEFY-P140VMA(L)-E	
Power source		1-phase 220-230-240V 50 / 60Hz						
Cooling capacity (Nominal)	*1 kW	7.1	8.0	9.0	11.2	14.0	16.0	
	*1 BTU/h	24,200	27,300	30,700	38,200	47,800	54,600	
Heating capacity (Nominal)	*2 kW	8.0	9.0	10.0	12.5	16.0	18.0	
	*2 BTU/h	27,300	30,700	34,100	42,700	54,600	61,400	
Power consumption	Cooling *3 kW	0.12 [0.10]	0.14 [0.12]	0.14 [0.12]	0.24 [0.22]	0.34 [0.32]	0.36 [0.34]	
	Heating *3 kW	0.10	0.12	0.12	0.22	0.32	0.34	
Current	Cooling *3 A	1.01 [0.90]	1.15 [1.04]	1.15 [1.04]	1.47 [1.36]	2.05 [1.94]	2.21 [2.10]	
	Heating *3 A	0.90	1.04	1.04	1.36	1.94	2.10	
External finish		Galvanized steel plate						
Dimension H x W x D	mm	250 x 1,100 x 732	250 x 1,100 x 732	250 x 1,100 x 732	250 x 1,400 x 732	250 x 1,400 x 732	250 x 1,600 x 732	
	in.	9-7/8 x 43-5/16 x 28-7/8	9-7/8 x 43-5/16 x 28-7/8	9-7/8 x 43-5/16 x 28-7/8	9-7/8 x 55-1/8 x 28-7/8	9-7/8 x 55-1/8 x 28-7/8	9-7/8 x 63 x 28-7/8	
Net weight	kg(lbs)	32 (71) [31(69)]	32 (71) [31 (69)]	32 (71) [31 (69)]	42 (93) [41 (91)]	42 (93) [41 (91)]	46 (102) [45 (10)]	
Heat exchanger		Cross fin (Aluminum fin and copper tube)						
Fan	Type x Quantity	Sirocco fan x 2						
	Airflow rate (Low-Mid-High)	m³/min	13.5 - 16.0 - 19.0	14.5 - 18.0 - 21.0	14.5 - 18.0 - 21.0	23.0 - 28.0 - 33.0	28.0 - 34.0 - 40.0	29.5 - 35.5 - 42.0
		L/s	225 - 267 - 317	242 - 300 - 350	242 - 300 - 350	383 - 467 - 550	467 - 567 - 667	492 - 592 - 700
	cfm	477 - 565 - 671	512 - 636 - 742	512 - 636 - 742	812 - 989 - 1,165	989 - 1,201 - 1,412	1,042 - 1,254 - 1,483	
External static pressure *4	Pa	<35> - 50 - <70> - <100> - <150>	<35> - 50 - <70> - <100> - <150>	<35> - 50 - <70> - <100> - <150>	<35> - 50 - <70> - <100> - <150>	<35> - 50 - <70> - <100> - <150>	<35> - 50 - <70> - <100> - <150>	
Motor	Type	DC motor						
	Output kW	0.121	0.121	0.121	0.244	0.244	0.244	
Air filter		PP honeycomb fabric.						
Refrigerant pipe diameter	Liquid (R410A) (R22,R407C) mm(in.)	9.52 (3/8) Brazed	9.52 (3/8) Brazed	9.52 (3/8) Brazed	9.52 (3/8) Brazed	9.52 (3/8) Brazed	9.52 (3/8) Brazed	
	Gas (R410A) (R22,R407C) mm(in.)	15.88 (5/8) Brazed	15.88 (5/8) Brazed	15.88 (5/8) Brazed	15.88 (5/8) Brazed	15.88 (5/8) Brazed	15.88 (5/8) Brazed	
Field drain pipe diameter	mm(in.)	O.D.32 (1-1/4)	O.D.32 (1-1/4)	O.D.32 (1-1/4)	O.D.32 (1-1/4)	O.D.32 (1-1/4)	O.D.32 (1-1/4)	
Sound pressure level (measured in anechoic room)								
(Low-Mid-High) *3 *5	dB(A)	29-32-36	30-34-38	30-34-38	32-37-41	35-40-44	36-41-45	
	*3 *6 dB(A)	25-29-33	26-29-34	26-29-34	28-33-37	32-36-40	33-37-42	

Notes:

- * [] is in case of PEFY-P VMA(L)-E
- *1 Nominal cooling conditions
Indoor: 27°CDB/19°CWB(81°FDB/66°FWB), Outdoor: 35°CDB(95°FDB)
Pipe length: 7.5m(24-9/16ft.), Level difference: 0m(0ft.)
- *2 Nominal heating conditions
Indoor: 20°CDB(68°FDB), Outdoor: 7°CDB(6°FWB)(45°FDB/43°FWB)
Pipe length: 7.5m(24-9/16ft.), Level difference: 0m(0ft.)
- *3 The values are measured at the rated external static pressure.
- *4 The rated external static pressure is shown without < >. The factory setting is the rated value.

- *5 Measured in anechoic room with a 1m air inlet duct and 2m air outlet duct attached to the unit and 1.5m below the unit.



- *6 Measured in anechoic room with a 2m air inlet duct and 2m air outlet duct attached to the unit and 1.5m below the unit.

