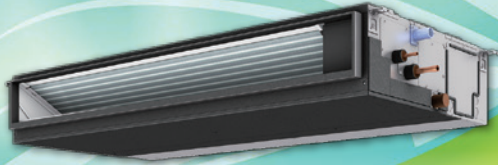


INDOOR UNIT

▶ **Medium Static Pressure Type**



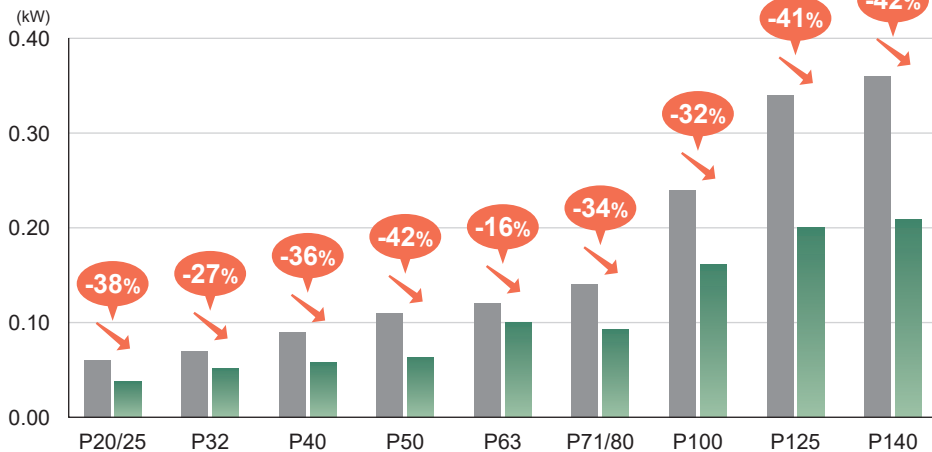
PEFY-P VMA(L)-E4



The new model offers a less power consumption and new functions. The slim 250-mm-height body and a maximum external static pressure of 150 Pa provide flexibility in system design.

Less power consumption

Comparison of energy consumption in cooling operation



The shape of fan wing and casing is improved to provide more smooth airflow. Besides, the drain pump motor is changed from AC motor to high-efficient DC motor. Operation efficiency is increased by the air flow and motor, which realizes up to 42% reduction in energy consumption (P50/140).

■ PEFY-P VMA-E (Conventional model)  
■ PEFY-P VMA-E4 (New model)

\*The values are measured at high fan speed setting and external static pressure of 50 Pa.

External static pressure is settable up to 150 Pa.

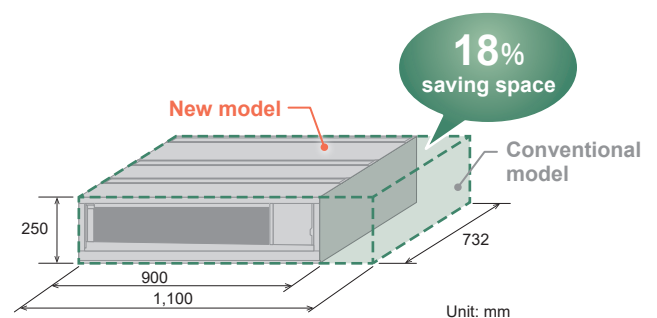
Five-stage external static pressure settings provide flexibility for duct extension, branching, and air outlet configuration and are adjustable to meet different application conditions. Setting ranges to maximum of 150 Pa.

• External static pressure settings

Series	20	25	32	40	50	63	71	80	100	125	140
PEFY-P VMA(L)-E4	35/50/70/100/150 Pa						40/50/70/100/150 Pa				

Compact unit requires less installation space (applicable to the P63 model only)

The use of new fan with improved air pathway helps to reduce the size of the P63 model unit. The P63 model unit is 200 mm less in width and fits into tighter ceiling space.



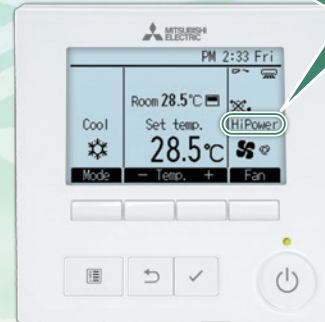
## New Functions

### High power fan speed mode

This start-up mode is run with the increased fan speed for a maximum of 15 minutes to rapidly cool or heat the space (after the first Thermo-ON operation).

- \*1. Power consumption and sound pressure level will increase in this mode.
- \*2. High power fan speed mode is not available when the external static pressure is set to 150 Pa.
- \*3. PAR-40/41MAA, PAR-U02MEDA, PAR-CT01MAA-S(B)/PB or PAC-YT52CRA is required for this setting. See the instructions and installation manuals for details.

• PAR-40MAA



"HiPower" is displayed on the monitor during high power fan speed mode.

\*High power fan speed mode can be displayed only with PAR-40/41MAA and PAR-CT01MAA-S(B)/PB.

## New Functions

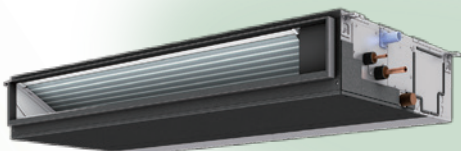
### Internal dry mode

To dry the heat exchanger, the unit will operate in the fan mode at high speed after cooling or drying operation has stopped. The drying time is selectable from 30 or 60 minutes.

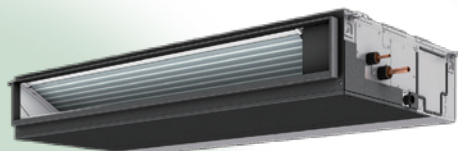
- \*1. PAR-40/41MAA, PAR-U02MEDA, PAR-CT01MAA-S(B)/PB or PAC-YT52CRA is required for this setting. See the instructions and installation manuals for details.
- \*2. When using AE-200E's apportioned electricity billing function to apportion electricity consumption of indoor units, do not use the internal dry operation function of indoor units.

### Drain pump is optionally selectable

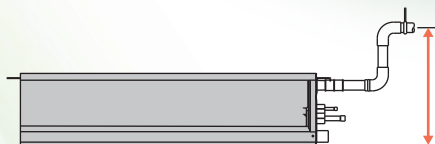
The lineup consists of two types: models with or without a built-in drain pump, thus allowing more freedom in piping layout design.



PEFY-P VMA-E4 Built-in drain pump



PEFY-P VMAL-E4 No drain pump



Drain pump ensures a lifting height of up to 700mm.

### Connectable to PAR-SL101A-E

Wireless remote controller PAR-SL101A-E is connectable.

- \*Signal receiver (PAR-SA9CA-E) is required.
- \*Weekly timer function is not available.



### Connectable to Plasma Quad Connect

The optional Plasma Quad Connect MAC-100FT-E can be installed on the indoor unit's air inlet side. For installation, PQ attachment or PQ box is required.

## Specifications (Built-in drain pump)

		PEFY-P20VMA-E4	PEFY-P25VMA-E4	PEFY-P32VMA-E4	PEFY-P40VMA-E4	PEFY-P50VMA-E4	PEFY-P63VMA-E4	
Power source		1-phase 220-230-240 V 50/60 Hz						
Cooling capacity (Nominal)	*1 kW	2.2	2.8	3.6	4.5	5.6	7.1	
	*1 BTU/h	7,500	9,600	12,300	15,400	19,100	24,200	
	Power input *2 Current input *2 (220-230-240 V)	kW A	0.032 0.26 - 0.25 - 0.24	0.032 0.26 - 0.25 - 0.24	0.044 0.36 - 0.34 - 0.33	0.047 0.39 - 0.37 - 0.36	0.066 0.53 - 0.51 - 0.49	0.087 0.69 - 0.66 - 0.63
Heating capacity (Nominal)	*3 kW	2.5	3.2	4.0	5.0	6.3	8.0	
	*3 BTU/h	8,500	10,900	13,600	17,100	21,500	27,300	
	Power input *2 Current input *2 (220-230-240 V)	kW A	0.030 0.26 - 0.25 - 0.24	0.030 0.26 - 0.25 - 0.24	0.042 0.36 - 0.34 - 0.33	0.045 0.39 - 0.37 - 0.36	0.064 0.53 - 0.51 - 0.49	0.085 0.69 - 0.66 - 0.63
External finish		Galvanized steel plate						
External dimension H x W x D	mm	250 x 700 x 732						
	in.	9-7/8 x 27-9/16 x 28-7/8						
Net weight		21.5 (49)		21.5 (49)		27 (60)		
Heat exchanger		Cross fin (Aluminum fin and copper tube)						
FAN	Type x Quantity	Sirocco fan x 1		Sirocco fan x 1		Sirocco fan x 2		
	External static press. *4	Pa		Pa		Pa		
	Motor Type	DC motor		DC motor		DC motor		
	Motor output	kW		kW		kW		
	Air flow rate (Lo-Mid-Hi)	m <sup>3</sup> /min	6.0 - 7.5 - 8.5		6.0 - 7.5 - 8.5		7.5 - 9.0 - 10.5	
		L/s	100 - 125 - 142		100 - 125 - 142		125 - 150 - 175	
		cfm	212 - 265 - 300		212 - 265 - 300		265 - 318 - 371	
Sound pressure level (measured in anechoic room) (Lo-Mid-Hi) *2 *5		dB <A>		dB <A>		dB <A>		
Air filter		PP honeycomb fabric.						
Refrigerant piping diameter	Liquid (R410A)	mm (in.)						
	Gas (R410A)	mm (in.)						
Field drain pipe size		mm (in.)						

		PEFY-P71VMA-E4	PEFY-P80VMA-E4	PEFY-P100VMA-E4	PEFY-P125VMA-E4	PEFY-P140VMA-E4	
Power source		1-phase 220-230-240 V 50/60 Hz					
Cooling capacity (Nominal)	*1 kW	8.0	9.0	11.2	14.0	16.0	
	*1 BTU/h	27,300	30,700	38,200	47,800	54,600	
	Power input *2 Current input *2 (220-230-240 V)	kW A	0.080 0.60 - 0.57 - 0.55	0.080 0.60 - 0.57 - 0.55	0.142 1.01 - 0.97 - 0.93	0.199 1.29 - 1.23 - 1.18	0.208 1.40 - 1.34 - 1.28
Heating capacity (Nominal)	*3 kW	9.0	10.0	12.5	16.0	18.0	
	*3 BTU/h	30,700	34,100	42,700	54,600	61,400	
	Power input *2 Current input *2 (220-230-240 V)	kW A	0.078 0.60 - 0.57 - 0.55	0.078 0.60 - 0.57 - 0.55	0.140 1.01 - 0.97 - 0.93	0.197 1.29 - 1.23 - 1.18	0.206 1.40 - 1.34 - 1.28
External finish		Galvanized steel plate					
External dimension H x W x D	mm	250 x 1,100 x 732					
	in.	9-7/8 x 43-5/16 x 28-7/8					
Net weight		30 (67)		37.5 (84)		41.5 (93)	
Heat exchanger		Cross fin (Aluminum fin and copper tube)					
FAN	Type x Quantity	Sirocco fan x 2		Sirocco fan x 3		Sirocco fan x 3	
	External static press. *4	Pa		Pa		Pa	
	Motor Type	DC motor		DC motor		DC motor	
	Motor output	kW		kW		kW	
	Air flow rate (Lo-Mid-Hi)	m <sup>3</sup> /min	14.5 - 18.0 - 21.0		14.5 - 18.0 - 21.0		23.0 - 28.0 - 32.0
		L/s	242 - 300 - 350		242 - 300 - 350		383 - 467 - 533
		cfm	512 - 636 - 742		512 - 636 - 742		812 - 989 - 1,130
Sound pressure level (measured in anechoic room) (Lo-Mid-Hi) *2 *5		dB <A>		dB <A>		dB <A>	
Air filter		PP honeycomb fabric.					
Refrigerant piping diameter	Liquid (R410A)	mm (in.)					
	Gas (R410A)	mm (in.)					
Field drain pipe size		mm (in.)					

### Notes:

\*1 Nominal cooling conditions

Indoor: 27°CDB/19°CWB (81°FDB/66°FWB), Outdoor: 35°CDB (95°FDB)

Pipe length: 7.5 m (24-9/16 ft.), Level difference: 0 m (0 ft.)

\*2 The values are measured at the factory setting of external static pressure.

\*3 Nominal heating conditions

Indoor: 20°CDB (68°FDB), Outdoor: 7°CDB/6°CWB (45°FDB/43°FWB)

Pipe length: 7.5 m (24-9/16 ft.), Level difference: 0 m (0 ft.)

\*4 The factory setting of airflow mode and external static pressure mode is shown without < >.

Refer to "Fan characteristics curves", according to the external static pressure, in DATA BOOK for the usable range of air flow rate.

\*5 Measured in anechoic room with a 1 m air inlet duct and 2 m air outlet duct attached to the unit and 1.5 m below the unit.

\*Details on foundation work, duct work, insulation work, electrical wiring, power source switch, and other items shall be referred to the Installation Manual.

\*Due to continuing improvement, above specifications may be subject to change without notice.

## Specifications (No drain pump)

		PEFY-P20VMAL-E4	PEFY-P25VMAL-E4	PEFY-P32VMAL-E4	PEFY-P40VMAL-E4	PEFY-P50VMAL-E4	PEFY-P63VMAL-E4	
Power source		1-phase 220-230-240 V 50/60 Hz						
Cooling capacity (Nominal)	*1 kW	2.2	2.8	3.6	4.5	5.6	7.1	
	*1 BTU/h	7,500	9,600	12,300	15,400	19,100	24,200	
	Power input *2 Current input *2 (220-230-240 V)	kW A	0.030 0.26 - 0.25 - 0.24	0.030 0.26 - 0.25 - 0.24	0.042 0.36 - 0.34 - 0.33	0.045 0.39 - 0.37 - 0.36	0.064 0.53 - 0.51 - 0.49	0.085 0.69 - 0.66 - 0.63
Heating capacity (Nominal)	*3 kW	2.5	3.2	4.0	5.0	6.3	8.0	
	*3 BTU/h	8,500	10,900	13,600	17,100	21,500	27,300	
	Power input *2 Current input *2 (220-230-240 V)	kW A	0.030 0.26 - 0.25 - 0.24	0.030 0.26 - 0.25 - 0.24	0.042 0.36 - 0.34 - 0.33	0.045 0.39 - 0.37 - 0.36	0.064 0.53 - 0.51 - 0.49	0.085 0.69 - 0.66 - 0.63
External finish		Galvanized steel plate						
External dimension H x W x D	mm	250 x 700 x 732		250 x 700 x 732		250 x 900 x 732		
	in.	9-7/8 x 27-9/16 x 28-7/8		9-7/8 x 27-9/16 x 28-7/8		9-7/8 x 35-7/16 x 28-7/8		
Net weight		21 (47)		21 (47)		25.5 (58)		
Heat exchanger		Cross fin (Aluminum fin and copper tube)						
FAN	Type x Quantity	Sirocco fan x 1		Sirocco fan x 1		Sirocco fan x 2		
	External static press. *4	Pa		Pa		Pa		
	Motor Type	DC motor		DC motor		DC motor		
	Motor output	kW		kW		kW		
	Air flow rate (Lo-Mid-Hi)	m <sup>3</sup> /min	6.0 - 7.5 - 8.5		6.0 - 7.5 - 8.5		7.5 - 9.0 - 10.5	
		L/s	100 - 125 - 142		100 - 125 - 142		125 - 150 - 175	
Sound pressure level (measured in anechoic room) (Lo-Mid-Hi) *2 *5		dB <A>		dB <A>		dB <A>		
Air filter		PP honeycomb fabric.						
Refrigerant piping diameter	Liquid (R410A)	mm (in.)		mm (in.)		mm (in.)		
	Gas (R410A)	mm (in.)		mm (in.)		mm (in.)		
Field drain pipe size		mm (in.)		mm (in.)		mm (in.)		

		PEFY-P71VMAL-E4	PEFY-P80VMAL-E4	PEFY-P100VMAL-E4	PEFY-P125VMAL-E4	PEFY-P140VMAL-E4	
Power source		1-phase 220-230-240 V 50/60 Hz					
Cooling capacity (Nominal)	*1 kW	8.0	9.0	11.2	14.0	16.0	
	*1 BTU/h	27,300	30,700	38,200	47,800	54,600	
	Power input *2 Current input *2 (220-230-240 V)	kW A	0.078 0.60 - 0.57 - 0.55	0.078 0.60 - 0.57 - 0.55	0.140 1.01 - 0.97 - 0.93	0.197 1.29 - 1.23 - 1.18	0.206 1.40 - 1.34 - 1.28
Heating capacity (Nominal)	*3 kW	9.0	10.0	12.5	16.0	18.0	
	*3 BTU/h	30,700	34,100	42,700	54,600	61,400	
	Power input *2 Current input *2 (220-230-240 V)	kW A	0.078 0.60 - 0.57 - 0.55	0.078 0.60 - 0.57 - 0.55	0.140 1.01 - 0.97 - 0.93	0.197 1.29 - 1.23 - 1.18	0.206 1.40 - 1.34 - 1.28
External finish		Galvanized steel plate					
External dimension H x W x D	mm	250 x 1,100 x 732		250 x 1,400 x 732		250 x 1,600 x 732	
	in.	9-7/8 x 43-5/16 x 28-7/8		9-7/8 x 55-1/8 x 28-7/8		9-7/8 x 63 x 28-7/8	
Net weight		29.5 (67)		37 (82)		41 (91)	
Heat exchanger		Cross fin (Aluminum fin and copper tube)					
FAN	Type x Quantity	Sirocco fan x 2		Sirocco fan x 3		Sirocco fan x 3	
	External static press. *4	Pa		Pa		Pa	
	Motor Type	DC motor		DC motor		DC motor	
	Motor output	kW		kW		kW	
	Air flow rate (Lo-Mid-Hi)	m <sup>3</sup> /min	14.5 - 18.0 - 21.0		23.0 - 28.0 - 32.0		28.0 - 34.0 - 37.0
		L/s	242 - 300 - 350		383 - 467 - 533		467 - 567 - 617
Sound pressure level (measured in anechoic room) (Lo-Mid-Hi) *2 *5		dB <A>		dB <A>		dB <A>	
Air filter		PP honeycomb fabric.					
Refrigerant piping diameter	Liquid (R410A)	mm (in.)		mm (in.)		mm (in.)	
	Gas (R410A)	mm (in.)		mm (in.)		mm (in.)	
Field drain pipe size		mm (in.)		mm (in.)		mm (in.)	

### Notes:

\*1 Nominal cooling conditions

Indoor: 27°CDB/19°CWB (81°FDB/66°FWB), Outdoor: 35°CDB (95°FDB)

Pipe length: 7.5 m (24-9/16 ft.), Level difference: 0 m (0 ft.)

\*2 The values are measured at the factory setting of external static pressure.

\*3 Nominal heating conditions

Indoor: 20°CDB (68°FDB), Outdoor: 7°CDB/6°CWB (45°FDB/43°FWB)

Pipe length: 7.5 m (24-9/16 ft.), Level difference: 0 m (0 ft.)

\*4 The factory setting of airflow mode and external static pressure mode is shown without < >.

Refer to "Fan characteristics curves", according to the external static pressure, in DATA BOOK for the usable range of air flow rate.

\*5 Measured in anechoic room with a 1 m air inlet duct and 2 m air outlet duct attached to the unit and 1.5 m below the unit.

\*Details on foundation work, duct work, insulation work, electrical wiring, power source switch, and other items shall be referred to the Installation Manual.

\*Due to continuing improvement, above specifications may be subject to change without notice.

## Optional Parts for PEFY-P VMA(L)-E4 series

Description	Model	Remarks
Filter box	PAC-KE91TB-E	For PEFY-P20/25/32VMA(L)-E4
	PAC-KE92TB-E	For PEFY-P40/50/63VMA(L)-E4
	PAC-KE93TB-E	For PEFY-P71/80VMA(L)-E4
	PAC-KE94TB-E	For PEFY-P100/125VMA(L)-E4
	PAC-KE95TB-E	For PEFY-P140VMA(L)-E4
Plasma Quad Connect*	MAC-100FT-E	
PQ attachment*	PAC-HA31PAR	For rear suction
	PAC-HA31PAU	For bottom suction
PQ box*	PAC-KE91PTB-E	For PEFY-P20/25/32VMA(L)-E4
	PAC-KE92PTB-E	For PEFY-P40/50/63VMA(L)-E4
	PAC-KE93PTB-E	For PEFY-P71/80VMA(L)-E4
	PAC-KE94PTB-E	For PEFY-P100/125VMA(L)-E4
	PAC-KE95PTB-E	For PEFY-P140VMA(L)-E4

\*Plasma Quad Connect (MAC-100FT-E) should be used together with PQ box or PQ attachment.

**MITSUBISHI ELECTRIC CORPORATION**

[www.MitsubishiElectric.com](http://www.MitsubishiElectric.com)