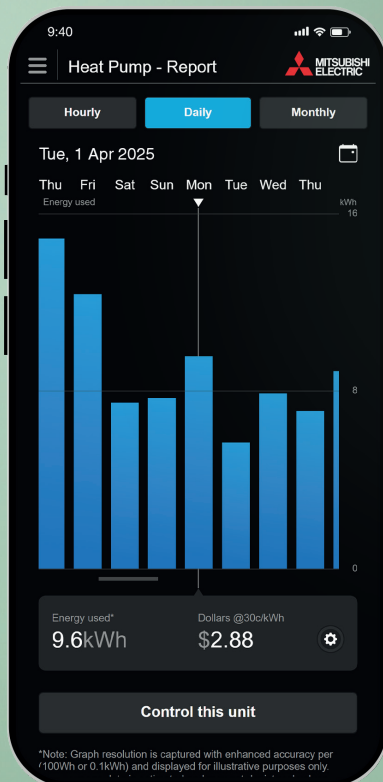


KW RapidHeat Smart[®] Series

New Zealand's Quietest Floor Console^{*}



Quick, quiet and clever
– when you need it most!

energy
MONITORING



^{*}MFZ-KW25/35/42 indoor sound level on lowest fan setting in Heating Mode.

New Zealand's Most Trusted Heat Pump



KW RapidHeat Smart Series



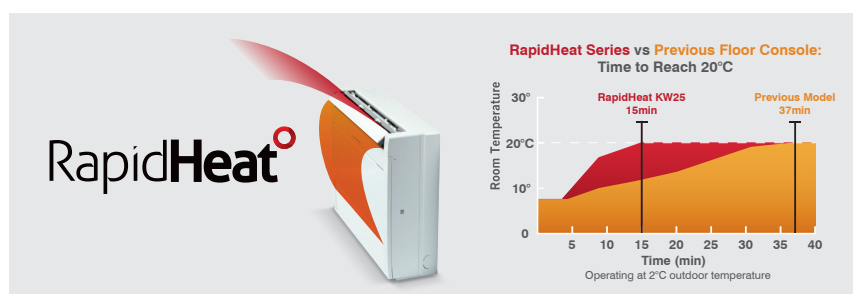
New Zealand's quietest floor consoles* feature a contemporary slimline design and dramatically reduced depth. KW RapidHeat Smart Floor Consoles are the perfect solution for unobtrusive heating at floor level with the benefit of Built-in Wi-Fi Control Energy Monitoring. New advanced sensors with Intuitive Control Logic Technology offer unparalleled low temperature heating performance in the shortest amount of time, all while maintaining maximum energy efficiency.



NZ's Quietest Floor Consoles*

Starting at barely a whisper, Mitsubishi Electric RapidHeat Smart Floor Consoles are New Zealand's quietest floor console heat pumps starting from just 18dBA*. This is achieved through the use of a larger fan scroll that not only enables the unit to be quieter, but also increases its efficiency when heating your home.

RapidHeat Technology



Advanced sensors coupled with Intuitive Control Logic mean optimal running temperatures are reached in the shortest amount of time possible with maximum energy efficiency. Automatically activated at start-up in low temperature conditions when Two-Way Airflow is selected, warm air is blown in a downward direction first before the air is returned back into the indoor unit where it is reheated a second time. As a result, a room can now be heated up to twice as fast compared to our previous model.†

Sleek, Sophisticated Design

Mitsubishi Electric RapidHeat Smart Floor Consoles feature a new contemporary design that can be recessed into your wall to dramatically reduce the depth of the indoor unit from 215mm to 145mm – a decrease of 33%. With the addition of a removable base, it is the perfect solution offering compact, unobtrusive heating for new buildings, renovation projects and fireplace replacements.

More Environmentally Friendly R32 Refrigerant

With a global warming potential that is 30% lower compared to older refrigerants such as R410A, next-generation R32 refrigerant has a much lower environmental impact. Furthermore, zero ozone depleting R32 is easier to reuse and recycle.



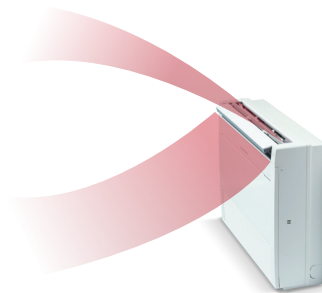
* MFZ-KW25/35/42 indoor sound level on lowest fan setting in Heating Mode.

† Compared to the previous MFZ-KA Series,

RapidHeat Smart

Multi Vane Flow for Even Heat Distribution

The Multi Vane Flow function blows warm air in both an upward and downward direction providing fast, even and effective heating whilst also reducing draughts. This is achieved via three uniquely shaped vanes that are designed for better airflow control and also provide the freedom to be customised to your preference.



Anti-Allergy Enzyme Filter



In addition to a washable Air Purifying Filter, the RapidHeat Smart Series features an Anti-Allergy Enzyme Filter which utilises enzyme catalysts to filter allergens and remove harmful bacteria.

7-Day Programmable Controller

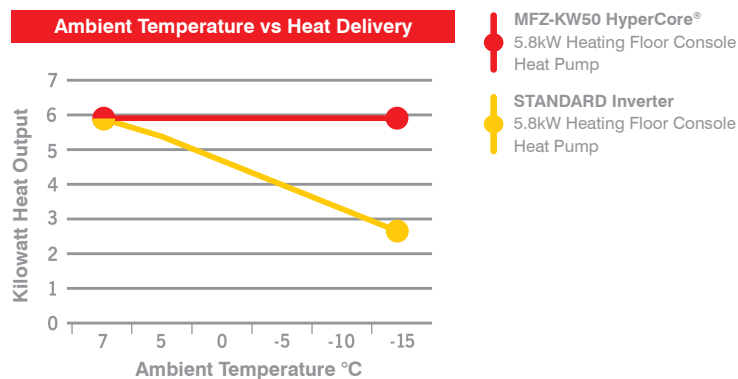


All RapidHeat Smart Series Floor Consoles feature a built-in weekly timer, allowing you to program up to four time and temperature settings for each day of the week. You can now return to comfort without having to manually adjust the temperature. Perfect for anyone with a busy lifestyle, the 7-Day Controller is a great way to regulate your energy usage without compromising on comfort.

Optional HyperCore Technology*



RapidHeat Smart Series Floor Consoles are available with optional HyperCore Technology. While ordinary heat pumps produce less heat below 7°C, Mitsubishi Electric HyperCore Technology continues to deliver its full rated heating capacity right down to -15°C, so you stay warm when you need it most.



Built-in Wi-Fi Control Energy Monitoring



With Built-in Wi-Fi Control you can pre-heat or cool a room no matter where you are. On the way home, running late, coming home early, or even when you're in a different country, with Wi-Fi Control you'll always arrive home to total comfort.

The intuitive app also features Energy Monitoring, allowing you to track indicative energy use so you can make more energy efficient choices when heating and cooling your space.

BUILT-IN
Wi-Fi
CONTROL

energy
MONITORING



Dimensions (WxDxH): 750 x 215 x 600mm

MFZ-KW25VGK

Heating Capacity: 3.4 kW | Cooling Capacity: 2.5 kW

MFZ-KW35VGK

Heating Capacity: 4.3 kW | Cooling Capacity: 3.5 kW

MFZ-KW42VGK

Heating Capacity: 5.4 kW | Cooling Capacity: 4.2 kW

MFZ-KW50VGK

Heating Capacity: 5.8 kW | Cooling Capacity: 5.0 kW

MFZ-KW60VGK

Heating Capacity: 6.5 kW | Cooling Capacity: 6.1 kW

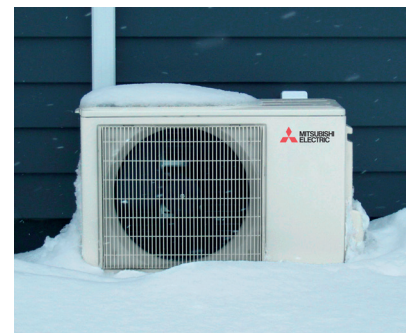
HYPERCORE®

MFZ-KW50VGKHZ

Heating Capacity: 5.8 kW | Cooling Capacity: 5.0 kW

MFZ-KW60VGKHZ

Heating Capacity: 6.5 kW | Cooling Capacity: 6.1 kW



HYPERCORE

* 5.0kW and 6.1kW models only.

KW RapidHeat Smart Series Specifications

| QUICK GLANCE | TYPE | | | Floor Console System | | | | | | | | | | | | | |
|-----------------|-------------------------|----------------|-----|------------------------------|-----|------------------------------|-----|------------------------------|-----|------------------------------|-----|------------------------------|-----|--|-----|------------------------------|-----|
| | SERIES | | | KW RapidHeat Smart Series | | | | | | | | | | KW RapidHeat Smart Series with HyperCore | | | |
| | MODEL | | | MFZ-KW25 | | MFZ-KW35 | | MFZ-KW42 | | MFZ-KW50 | | MFZ-KW60 | | MFZ-KW50HZ | | MFZ-KW60HZ | |
| | REFRIGERANT | | | R32 | | | | | | | | | | | | | |
| | INDOOR UNIT | | | MFZ-KW25VGK | | MFZ-KW35GK | | MFZ-KW42VGK | | MFZ-KW50VGK | | MFZ-KW60VGK | | MFZ-KW50VGK | | MFZ-KW60VGK | |
| | OUTDOOR UNIT | | | MUFZ-KW25VG2 | | MUFZ-KW35VG2 | | MUFZ-KW42VG2 | | MUFZ-KW50VG2 | | MUFZ-KW60VG2 | | MUFZ-KW50VGHZ2 | | MUFZ-KW60VGHZ2 | |
| | COOL | | | 2.5kW 4.38 EER 20 dBA* | | 3.5kW 4.02 EER 20 dBA* | | 4.2kW 3.78 EER 20 dBA* | | 5.0kW 3.78 EER 27 dBA* | | 6.1kW 3.52 EER 27 dBA* | | 5.0kW 3.78 EER 27 dBA* | | 6.1kW 3.52 EER 27 dBA* | |
| | HEAT | | | 3.4kW 4.35 COP 18 dBA* | | 4.3kW 3.77 COP 18 dBA* | | 5.4kW 3.77 COP 18 dBA* | | 5.8kW 3.79 COP 29 dBA* | | 6.5kW 3.45 COP 29 dBA* | | 5.8kW 3.79 COP 29 dBA* | | 6.5kW 3.45 COP 29 dBA* | |
| | ZERL STAR RATINGS | (NZ) Cold Area | | 3.5 | 2.5 | 3.5 | 2.0 | 3.0 | 2.0 | 2.5 | 2.0 | 2.5 | 2.0 | 2.5 | 2.0 | 2.5 | 2.0 |
| | | Avg Area† | | 3.5 | 2.5 | 3.0 | 2.5 | 2.5 | 2.5 | 2.5 | 2.5 | 2.5 | 2.5 | 2.5 | 2.5 | 2.5 | 2.5 |
| Hot Area† | | 4.0 | 3.0 | 3.5 | 3.0 | 3.0 | 3.0 | 3.0 | 3.0 | 2.5 | 3.0 | 3.0 | 3.0 | 2.5 | 3.0 | | |

| COOL | Capacity | Rated | [kW] | 2.5 | | 3.5 | | 4.2 | | 5.0 | | 6.1 | | 5.0 | | 6.1 | | |
|------|----------------------------------|---------------------|-------|-------------|-----|-------------|-----|-------------|-----|-------------|-----|-------------|-----|-------------|-----|-------------|-----|--|
| | | Min-Max | [kW] | 0.7 - 3.4 | | 0.7 - 3.8 | | 0.7 - 5.0 | | 1.0 - 5.7 | | 1.0 - 6.5 | | 1.0 - 5.7 | | 1.0 - 6.5 | | |
| | Total Input | Rated | [kW] | 0.57 | | 0.87 | | 1.11 | | 1.32 | | 1.73 | | 1.32 | | 1.73 | | |
| | EER/AEER | | | 4.38 / 4.32 | | 4.02 / 3.98 | | 3.78 / 3.75 | | 3.78 / 3.76 | | 3.52 / 3.50 | | 3.78 / 3.76 | | 3.52 / 3.50 | | |
| | Indoor Sound Level | Quiet | [dBA] | 20 | | 20 | | 20 | | 27 | | 27 | | 27 | | 27 | | |
| | | Low-SH ¹ | [dBA] | 26-32-38-44 | | 26-32-38-44 | | 28-36-43-51 | | 31-35-39-44 | | 35-39-46-53 | | 31-35-39-44 | | 35-39-46-53 | | |
| | Running Current (Rated) | | | [A] | 3.0 | | 4.2 | | 5.1 | | 5.8 | | 7.7 | | 5.8 | | 7.7 | |
| | Air Volume In (SH ¹) | | | [L/s] | 172 | | 172 | | 228 | | 177 | | 250 | | 177 | | 250 | |

| HEAT | Capacity | Rated | [kW] | 3.4 | | 4.3 | | 5.4 | | 5.8 | | 6.5 | | 5.8 | | 6.5 | | |
|------|----------------------------------|---------------------|-------|-------------|-----|-------------|-----|-------------|-----|-------------|-----|-------------|-----|-------------|-----|-------------|-----|--|
| | | Min-Max | [kW] | 0.23 - 4.6 | | 0.23 - 6.0 | | 0.23 - 6.7 | | 1.2 - 8.2 | | 1.2 - 8.8 | | 1.2 - 8.4 | | 1.2 - 9.0 | | |
| | | @-15°C | [kW] | - | | - | | - | | - | | - | | 5.8 | | 6.5 | | |
| | Total Input | Rated | [kW] | 0.78 | | 1.14 | | 1.43 | | 1.53 | | 1.88 | | 1.53 | | 1.88 | | |
| | COP / ACOP | | | 4.35 / 4.31 | | 3.77 / 3.74 | | 3.77 / 3.75 | | 3.79 / 3.77 | | 3.45 / 3.44 | | 3.79 / 3.77 | | 3.45 / 3.44 | | |
| | Indoor Sound Level | Quiet | [dBA] | 18 | | 18 | | 18 | | 29 | | 29 | | 29 | | 29 | | |
| | | Low-SH ¹ | [dBA] | 25-31-38-44 | | 25-31-38-44 | | 27-36-44-51 | | 35-40-45-50 | | 35-41-47-51 | | 35-40-45-50 | | 35-41-47-51 | | |
| | Running Current (Rated) | | | [A] | 3.8 | | 5.3 | | 6.4 | | 6.8 | | 8.3 | | 6.8 | | 8.3 | |
| | Air Volume In (SH ¹) | | | [L/s] | 173 | | 173 | | 235 | | 233 | | 243 | | 233 | | 243 | |

| Controller | Standard | | | 7-Day Programmable Controller | | | | | | | | | | | | | |
|-------------------------|---|--|-------|---|--|---------------|--|---------------|--|-----------------|--|---------------|--|---------------|--|---------------|--|
| | Optional Wired 7-Day Timer | | | Optional: PAR Controller (Interface Required) | | | | | | | | | | | | | |
| Wi-Fi | | | | Built-in with Energy Monitoring | | | | | | | | | | | | | |
| Power Supply | (Powered From Outdoor Unit) | | | 230V / Single Phase / 50 Hz | | | | | | | | | | | | | |
| | Maximum Current | | [A] | 9.9 | | 9.9 | | 10.1 | | 15.3 | | 15.4 | | 15.3 | | 15.4 | |
| Indoor | Dimensions (WxDxH) | | [mm] | 750 x 215 x 600 | | | | | | | | | | | | | |
| | Weight | | [kg] | 15 | | | | | | | | | | | | | |
| Outdoor | Dimensions (WxDxH) | | [mm] | 800 x 285 x 550 | | | | | | 840 x 330 x 880 | | | | | | | |
| | Weight | | [kg] | 35 | | | | | | 54 | | | | | | | |
| | Sound Level - SPL ³ /Power (Cooling-Heating) | | [dBA] | 48-46 / 61-59 | | 48-47 / 61-60 | | 48-47 / 62-61 | | 53-56 / 66-69 | | 53-56 / 66-69 | | 53-56 / 66-69 | | 53-56 / 66-69 | |
| | | | | | | | | | | | | | | | | | |
| Piping | Diameter (Liquid/Gas) | | [mm] | 6.35 / 9.52 | | 6.35 / 9.52 | | 6.35 / 9.52 | | 6.35 / 12.7 | | 6.35 / 12.7 | | 6.35 / 12.7 | | 6.35 / 12.7 | |
| | Max. Length/Height [†] | | [m] | 20 / 12 | | 20 / 12 | | 20 / 12 | | 30 / 15 | | 30 / 15 | | 30 / 15 | | 30 / 15 | |
| | Chargeless Piping Length | | [m] | 7 | | 7 | | 7 | | 7 | | 7 | | 7 | | 7 | |
| Operation Range Outdoor | Cooling | | [°C] | -10 / +46 | | -10 / +46 | | -10 / +46 | | -10 / +46 | | -10 / +46 | | -10 / +46 | | -10 / +46 | |
| | Heating | | [°C] | -15 / +24 | | -15 / +24 | | -15 / +24 | | -15 / +24 | | -15 / +24 | | -25 / +24 | | -25 / +24 | |
| Indoor Unit Colour | | | | White | | | | | | | | | | | | | |

EER = Energy Efficiency Ratio
 COP = Coefficient of Performance
 AEER = Annual Energy Efficiency Ratio
 ACOP = Annual Coefficient of Performance
 SPL = Sound Pressure Level
¹ SHi = Super High
² Low-SH¹ = Low-Medium-High-Super High
³ SPL measured under rated operating frequency

* Indoor Sound Levels rated at lowest fan speed.
 † Maximum length is inclusive of height differential i.e.
 (20/12) means the pipe can be 12m high and 8m across
 for a total length of 20m.
 Rating Conditions (AS / NZS 3823).
 Cooling: Indoor: 27°C DB, 19°C WB. Outdoor: 35°C DB
 Heating: Indoor: 20°C DB Outdoor: 7°C DB, 6°C WB.



Learn more about the RapidHeat Smart Series

For more information please visit our website or call our Customer Service Team.
www.mitsubishi-electric.co.nz | 0800 784 382

PUBLISHED MAY 2025

PLEASE LOOK AFTER THE ENVIRONMENT AND RECYCLE



Black Diamond
Technologies Limited



Exclusive New Zealand
Partner Since 1981

